



47 Oleander Crescent
Cherry Lodge, Northampton

oriordanbond



47 Oleander Crescent

Cherry Lodge

Northampton NN3 8QP

£240,000

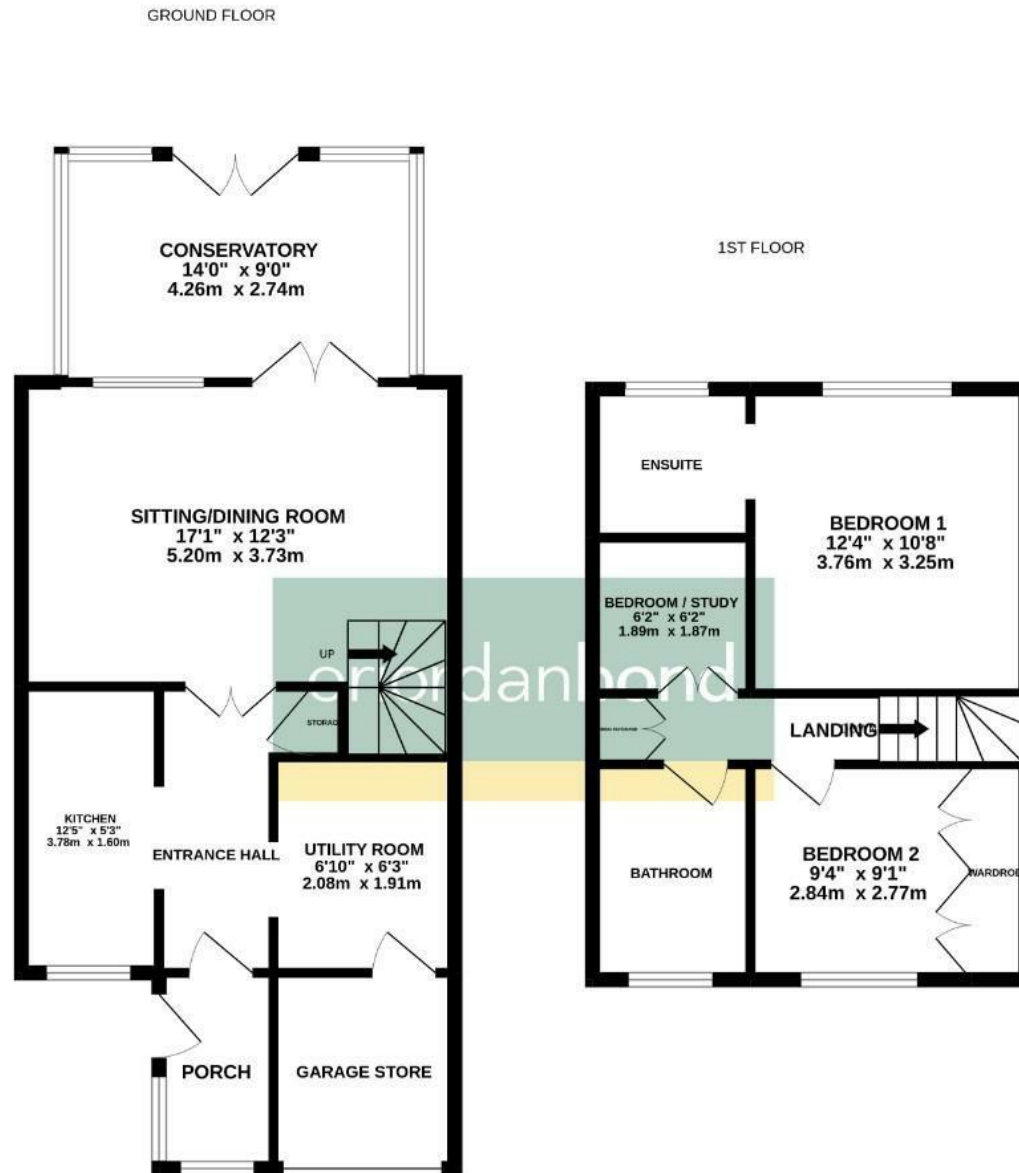
A well presented three bedroom terraced home, located in the popular area of Cherry Lodge, within easy access to Weston Favell Shopping Centre, shops and local schools.

The accommodation comprises entrance porch, kitchen, part converted garage providing a utility area and sitting/dining room with double doors into a conservatory. To the first floor are two double bedrooms with en-suite to the master, a single bedroom/study and a family bathroom. Outside is an enclosed low maintenance rear garden with fully electric workshop and a double width blocked paved driveway to front providing off road parking for two cars. Further benefits include uPVC double glazing and gas radiator heating. (B/900/S)

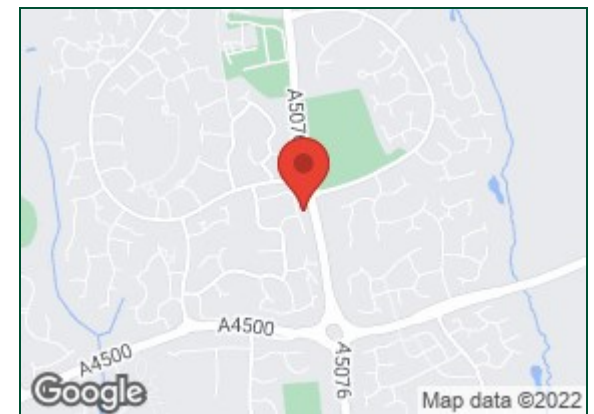
- Three bedroom terraced home
- En-suite to master bedroom
- Conservatory
- Gas radiator heating
- Low maintenance rear garden with workshop
- Off road parking







TOTAL FLOOR AREA: 900sq ft. (83.6 sq.m.) approx.
 Whilst every attempt has been made to ensure the accuracy of the floorplan contained here, measurements of doors, windows, rooms and any other items are approximate and no responsibility is taken for any error, omission or mis-statement. This plan is for illustrative purposes only and should be used as such by any prospective purchaser. The services, systems and appliances shown have not been tested and no guarantee as to their operability or efficiency can be given.
 Made with Metropix ©2022



Additional information

- Council Tax Band: B
- Energy Efficiency Rating: C

Viewing

Viewing strictly by appointment – details below

Disclaimer

O’Riordan Bond Estate Agents Limited has not tested apparatus, equipment, fittings or services and so cannot verify they are in working order. The buyer is advised to obtain verification from their solicitor or surveyor.

O’Riordan Bond Weston Favell Sales

01604 784007

westonfavell@oriordanbond.co.uk

